



2310 Alamance Church Rd.  
Greensboro, NC. 27406

[info@pondlakemanagement.com](mailto:info@pondlakemanagement.com)

(336) 669-1016

---

# We are having our Fall Fish Day!

**Wednesday October 18<sup>th</sup>.**

This is the **ONLY** day and we will not have  
another one until Spring.

The Fish Truck will be here at my Shop (house).

We are taking orders for anyone wanting to stock their ponds. **Please let us know by  
Friday October 6<sup>th</sup>** if you are interested in purchasing any fish. Email your order with types  
and quantities of each.

**Once we have all orders in and placed, “another email”  
will come out with the time we will need you to  
arrive for pick up.**

*(We cannot deliver, due to the amount of customers arriving)*

Payment will be due when you pick up your fish. **We can only accept cash or checks (no credit cards  
for fish but may be used for other products)**

I have attached the price sheet and a picture sheet along with recommended stocking amounts per  
acre. Fish are sold at a minimum of 100 fish except for grass carp (which are \$12 each) and bass (sold in  
increments of 25).

Fish bags will be filled with oxygen and are \$1.00 each. The approximate number of fish per bag are as  
follows (same-sized bluegill, shellcracker, and redbreast may be combined for convenience):

Sterile Grass Carp 8-11": 10 per bag  
Channel Catfish 3-5": 100-200 per bag  
Coppernose Bluegill 1-3": 500 per bag  
Shellcracker 1-3": 500 per bag  
Redbreast 1-3": 500 per bag  
Largemouth Bass 2-4": 100-200 per bag  
Mosquitofish: 500 per bag

Bass will NOT be available during this time, which is typical in the fall. Better to stock bass in the spring!  
Grass Carp are our natural "lawn mowers" for the pond. They will help to naturally keep the unwanted vegetation from getting out of control.

Be aware if you choose catfish or crappy, both can become aggressive and may take over and be the only fish remaining in your pond.

We will also have some products available that day for purchase on sale.  
Fish Feeders, Fish food, turtle traps, bar Guards, herbicides, pond dyes and more!

Please call or email if you have any questions.

## 2023 Fish Days-Round 3

Pond Lake Management

336-669-1016

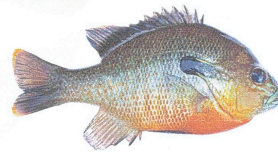
Date : Wednesday, October 18



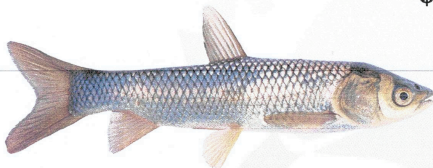
**Coppernose Bluegill 1-3"**  
**\$55 per 100**



**Mosquitofish**  
**\$40 per 100**



**Redbreast**  
**1-3" \$65 per 100**



**Sterile Grass Carp**  
**8-11" \$12 each**



**Channel Catfish 3-5"**  
**\$65 per 100**

[southlandfisheries.com](http://southlandfisheries.com)

 [@southlandfisheries](https://www.instagram.com/southlandfisheries)

 [Southland Fisheries](https://www.facebook.com/SouthlandFisheries)

**Pond Lake Management, LLC**  
**2023 Retail Pricelist – (subject to changes)**

\$1 per Oxygenated Bag for transporting fish -

\*\* = Not Normally Available.

<u>Species of Fish</u>	<u>Recommend per Acre:</u>	<u>Size</u>	<u>Price</u>
Grass Carp (sterile)	8-10 New Pond or 15-25 w/ established weeds/grass	8-11" 12"+	\$12 each \$16 each
Bluegill Bream - Coppnose	1000 (or 700 w/ Shellcracker)	1-3"	\$55 per 100
" " "	" " "	3-5"	\$125 per 100
Shellcracker – Redear Sunfish	1000 (or 300 w/ Bluegill)	1-3"	\$65 per 100
" " "	" " "	3-5" **	\$140 per 100
Redbreast - Sunfish	300 - 500	1-3"	\$65 per 100
" "	" "	3-5" **	\$140 per 100
Channel Catfish	300 - 500	3-5"	\$65 per 100
" "	" "	5-7" **	\$125 per 100
Largemouth Bass	100	1-3"	\$200 per 100
" "	" "	3-5" **	\$400 per 100
Blue Tilapia (Tropical Fish)	300 - 500	<u>seasonal</u> 1-3"	\$95 per 100
" "	" "	<u>seasonal</u> 3-5"	\$195 per 100
Gambusia (Mosquitofish)	1000	N/A	\$40 per 100
KOI =	up to 5" = \$10ea.; 6"-10" = \$20ea.; 11"+ = \$30ea.		
Threadfin Shad =	*seasonal-late fall*	1/2Load = \$1000 ; Full Load = \$1800	

<u>---Equipment/Products---</u>	<u>Description</u>	<u>Price</u>	<u>Feeders:</u>
<b>Sweeney Fish Feeders:</b>	AFC125GR-LD(holds 125#)	\$1,566.70	<b>Feeders:</b>
(Directional feeder complete w/ solar charger, battery, legs)	<b>Green Finish Dock Legs</b> AFC125GR-LR(holds 125#)	\$1,593.39	*Can Drop Ship for price + shipping
	<b>Green Finish Bank Legs</b>		
<b>Tomahawk Traps:</b>	409 Turtle Trap	\$265	<b>Traps:</b> *Can drop ship #409 for price shown.
<b>Fish Feed</b> (45% Protein – Floating)	50# Bag – Cargill (high quality)	\$55	
<b>Pond Dye</b>		\$35 gallon	

\*Full assortment of herbicides available to treat unwanted vegetation

